

MONTHLY MEMBERSHIP PROGRESS REPORT

District 4 C2

Results as of: 3/31/2026

GMT:

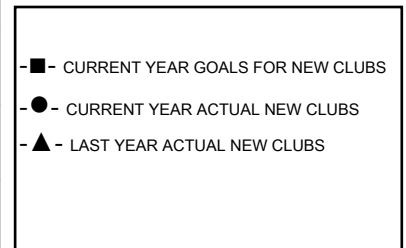
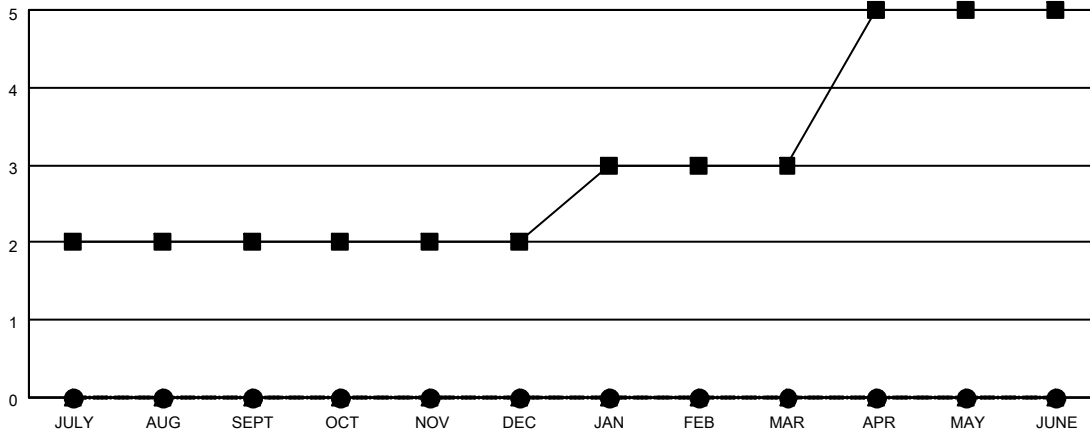
LOCATION CALIFORNIA

GMT CA

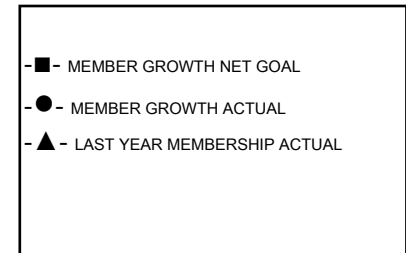
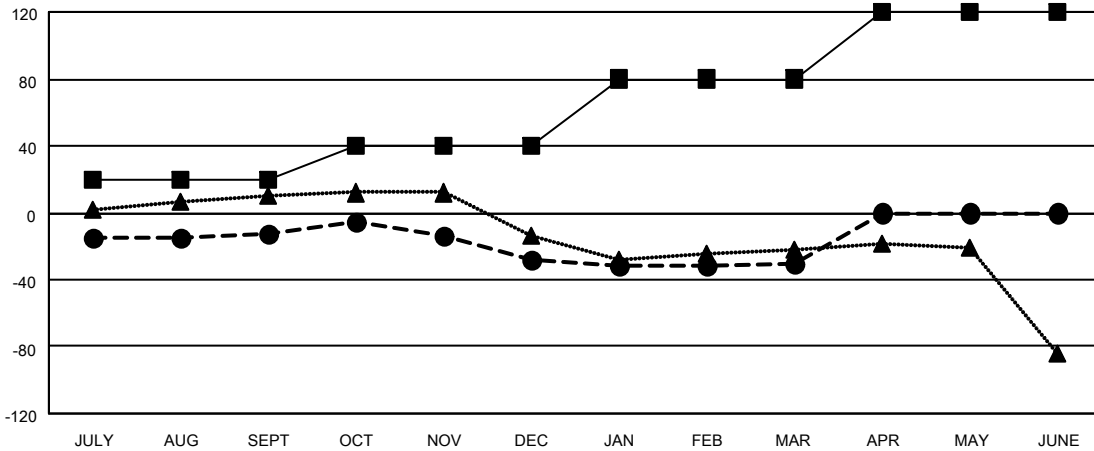
Clubs			
RESULTS FOR 2025-2026			
QUARTER	NEW CLUB GOAL	NEW CLUBS	DROPPED CLUBS
JULY/AUG/SEPT	2	0	0
OCT/NOV/DEC	0	0	1
JAN/FEB/MAR	1	0	0
APR/MAY/JUNE	2	0	0

Members			
RESULTS FOR 2025-2026			
QUARTER	MEMBER GROWTH NET GOAL	MEMBER GROWTH ACTUAL	DROPPED MEMBERS ACTUAL (including transfers)
JULY/AUG/SEPT	20	40	34
OCT/NOV/DEC	20	24	39
JAN/FEB/MAR	40	24	24
APR/MAY/JUNE	40	0	0

GOALS AND ACTUAL NEW CLUBS CUMULATIVE



GOALS AND ACTUAL MEMBERS CUMULATIVE



DROPPED CLUBS: 1	
DROPPED MEMBERS	
DECEASED	11
CLUB CANCELLED	13
OTHER	72
TOTAL	96

27 CLUBS OF 46 ADDED 1 OR MORE NEW MEMBERS

GENDER DISTRIBUTION	
MALE	690 (64.85%)
FEMALE	372 (34.96%)

[CLICK HERE FOR CUMULATIVE MEMBERSHIP DATA](#)

TOTAL FAMILY UNIT MEMBERS	169
FAMILY MEMBERS PAYING HALF DUES	86